

MetaSphere
OMS

MetaSphere

Tremend Software Consulting

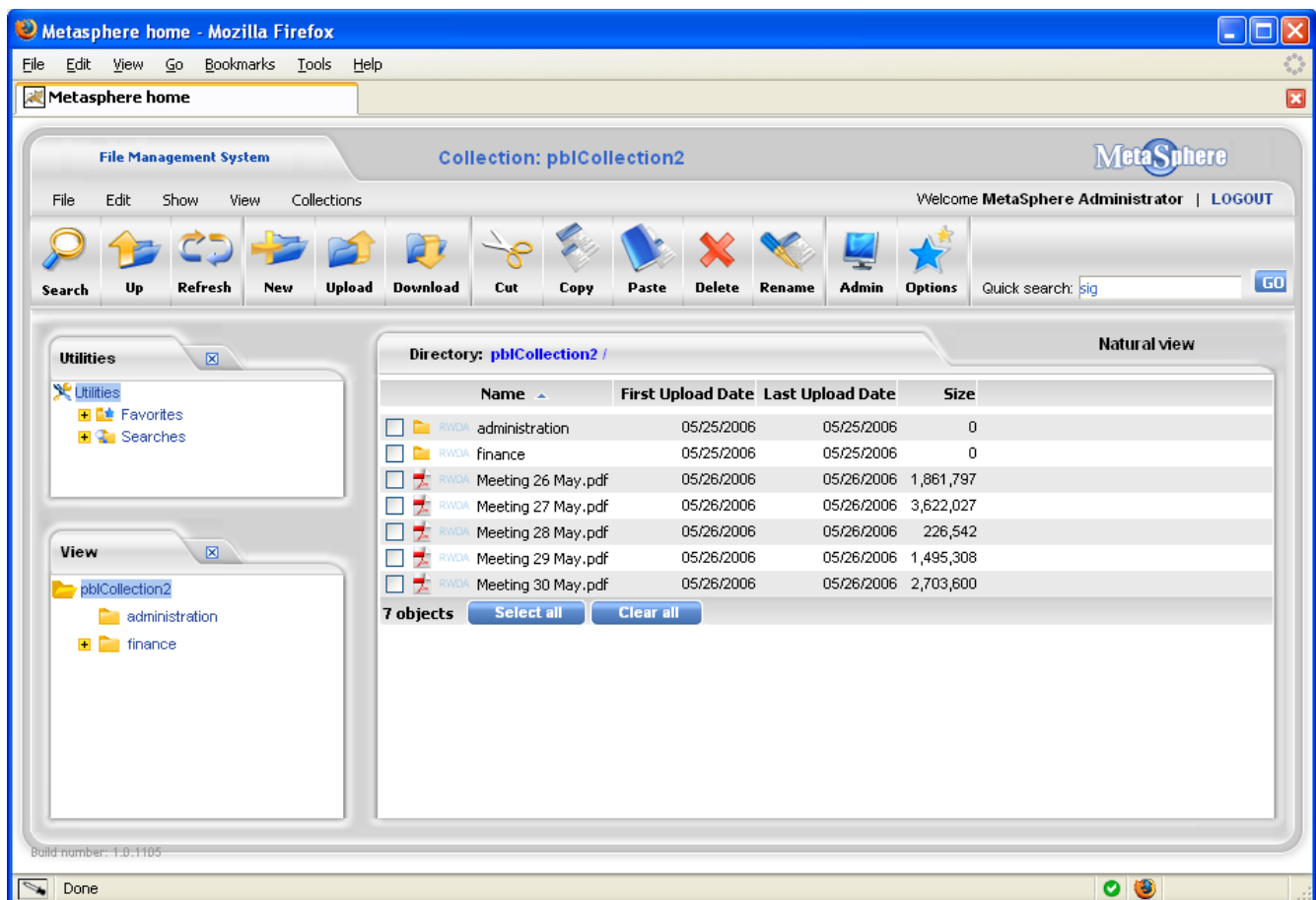
Metasphere Key Features

Metadata support

Attributes - Instead of being limited to the regular name, size or creation date attributes, Metasphere provides unlimited ways of categorizing enterprise data using advanced metadata support.

Faceted Classification - Based on the custom attributes, users can define and visualize the system using custom views. Views are defined by a list of attributes. They allow users to view the system from a perspective other than the insufficient folder/files structure.

Collections - Administrators can group related content in collections of documents and allow access to appropriate users and groups.



Security

LDAP Integration – Metasphere can be easily integrated with any standard LDAP (Lightweight Directory Access Protocol) system such as Microsoft Active Directory, Novell, or SunOne.

File Level Security Mechanism – Metasphere provides enterprise level security employing also a custom mechanism. Users and groups can be defined along with the possibility to customize access to any folder or file on the system.

Secure Web Access – Using HTTPS, Metasphere can be accessed securely outside company VPN.

Search

Indexing capabilities – Metasphere recognizes and extracts text from most commonly used file types such as Adobe PDF, Microsoft Word/Excel/Powerpoint, Open Office, HTML and many others. Using a powerful indexing mechanism, searches in the content of the documents are a matter of milliseconds, providing a responsive interface.

Content search – Metasphere will search the content of all known types and will order the results by relevance. For unknown types, text extracts for each document can be imported with FTP or native import feature.

Google like queries – Metasphere search supports Google like expressions for the best search experience.

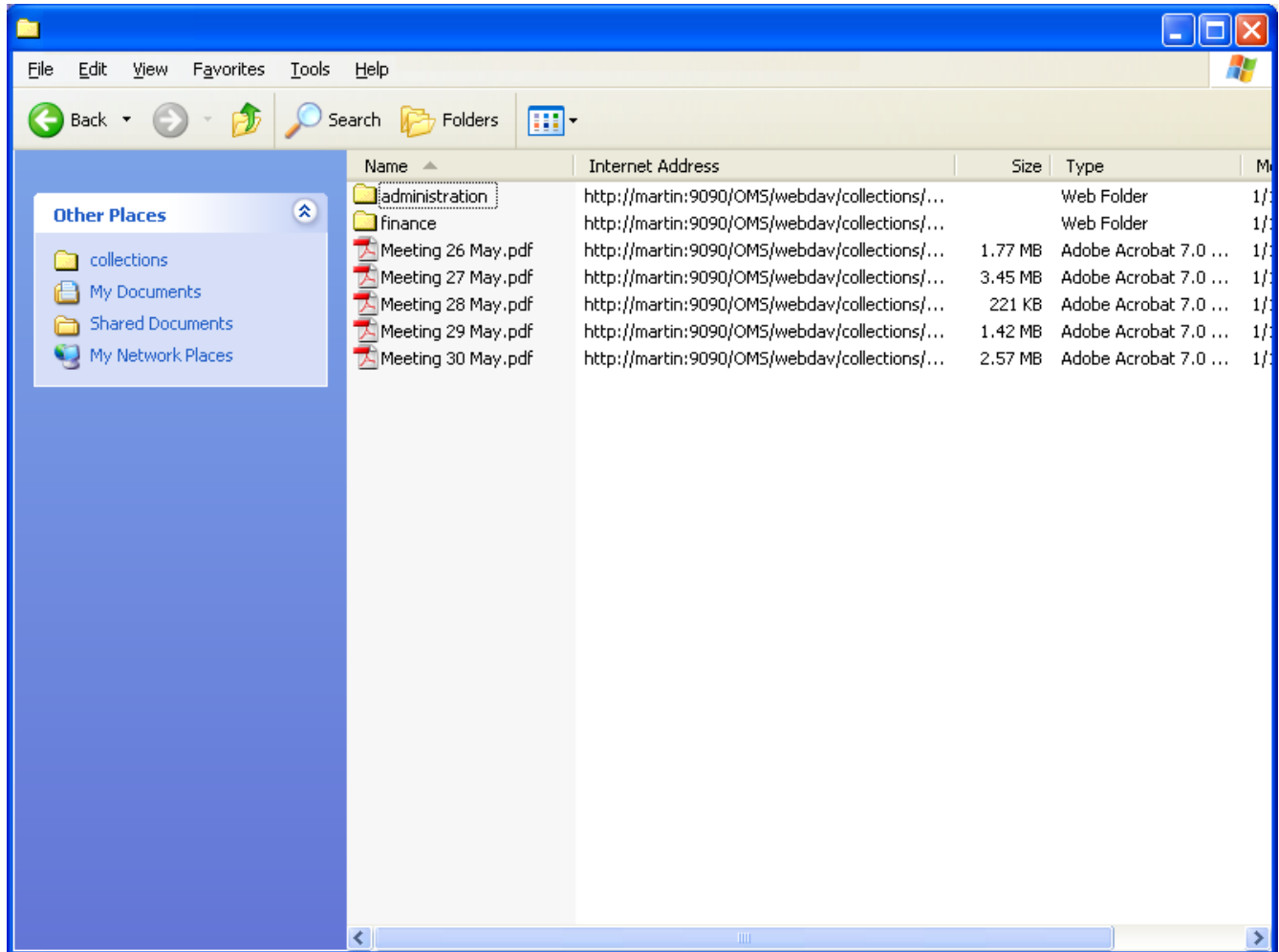
Metadata search – Search can be performed on any metadata like custom attributes, keywords or name.

Save your work – You can always save a complex search query and come back later and execute it again.

Usability

Familiar User Interface – Metasphere provides a Windows Explorer like interface, allowing the user to enjoy the benefits of a desktop application in the browser without any software installed. The user interface uses latest technologies like AJAX (Asynchronous JavaScript) for the best user experience.

WebDAV Support – Metasphere implements WebDAV access protocol, allowing management of stored content using standard clients such as Windows Explorer.



User customizations – Giving users the possibility to customize the application to their own specific needs it is a must in any enterprise application. Metasphere allows user to customize favorites, searches or visible attributes.

Avoid mail attachments – Users can issue Tickets, allowing temporary access to a resource within the system. This allows sharing resources securely to people within or outside the organization.

Cross-browser – Metasphere has been tested and certified to work with Microsoft Internet Explorer 6.0+ and Mozilla Firefox 1.0+.

Easy setup and maintenance

Installation – Installation is made easy through a self explanatory platform independent graphical installer.

Operating system and database agnostic – Metasphere runs on Linux/Unix and

Windows 2000+ platforms. It has been certified on Microsoft SQL Server and PostgreSQL database but it can use the lightweight HSQL database as well.

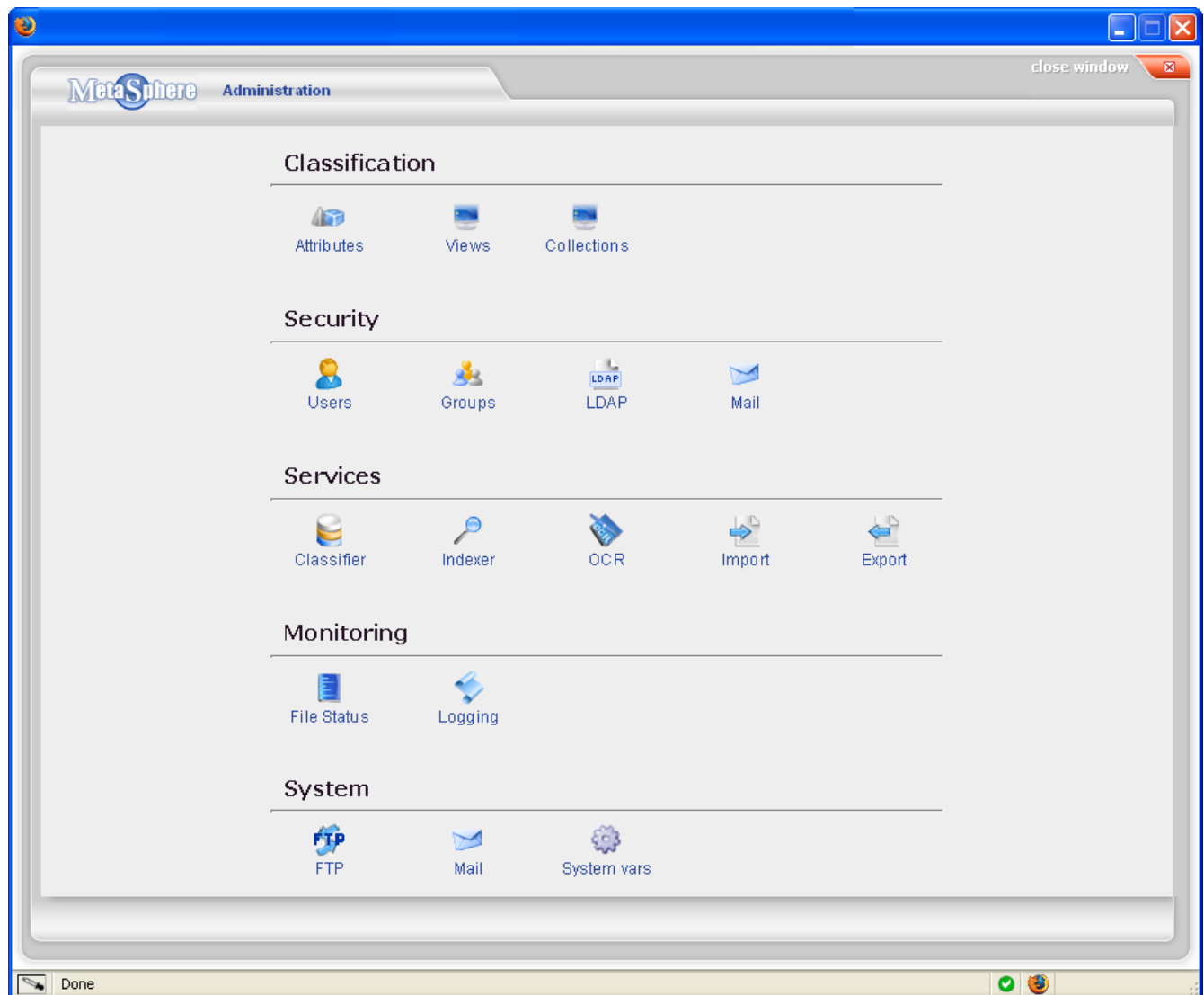
Import/export - Although MetaspHERE uses a database to store its internal data, the ability to export the internal structure of the system into a regular file system structure or to import folders from file system provides the maximum of flexibility for users.

Monitoring - The administrator can always monitor current file status.

Logging - The administrator can see detailed logs about user activity and system events.

Backup - Automatic scheduled scripts back up data to disk or CD/DVD.

Undelete - Administrator can recover accidental user deletions. By default, files are not deleted until permanently purged by the system administrator.



OCR engine integration

OCR server integration - Metasphere sends unknown content to configured OCR engine. Communication is done using mounted drives and sets of scripts to trigger OCR processes.

OCR monitoring - Administration provides file status and OCR re-scheduling.

System requirements

Server

- Any platform supporting J2SE such as: Windows NT, 2000, 2003, XP, Linux, etc

Client

- Internet Explorer 6.0+ or Mozilla Firefox 1.0+